



# WamBlee

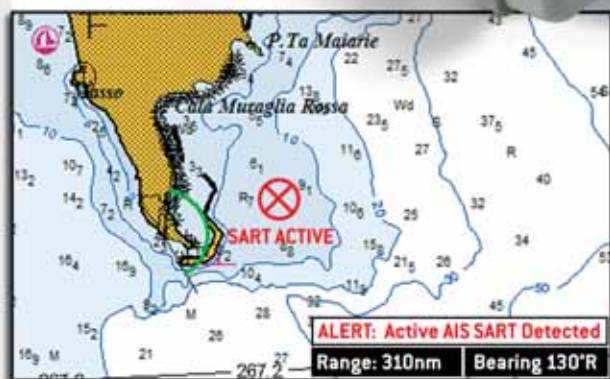
Committed to Excellence

# W406

## AMRD Group B Receiver

### MOB AMRD GROUP B RECEIVER

- COMPATIBLE WITH MOB W422.
- FULLY AUTOMATIC OPERATION.
- DATA OUTPUT IN NMEA 0283 FORMAT.
- CONNECTABLE TO ALL CHARTPLOTTERS.
- LOW CONSUMPTION.



# W406

# rescue device

The W406 receiver is a receiver specifically designed for MOB applications in AMRD group B.

The recent AMRD regulation divides MSLD devices into two groups. Group A defines radio locators capable of operating simultaneously in DSC and AIS mode, while group B defines free-license devices that can be used between MOB and Vessel.

Easy to install, the W406 receiver is able to receive messages transmitted by Wamblee MOB W422 devices, process the information received and convert it into AIVDM messages that can be displayed on any chart plotter equipped with an NMEA 0283 interface.

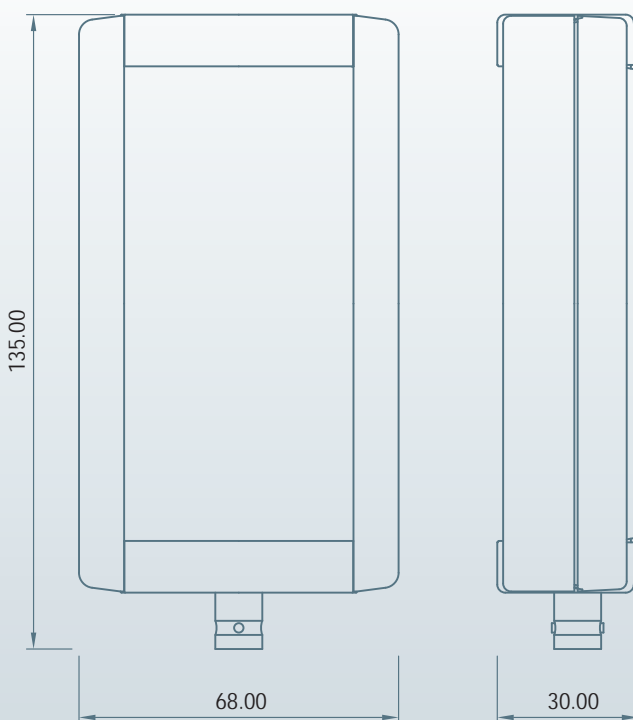
The information received (such as the alarm and the position of the castaway) can be directly displayed on the screen of your cartographic system.

The receiver requires the installation of a VHF antenna.

## TECHNICAL SPECIFICATIONS

- GMSK blackbox<sup>2</sup> direct synthesis receiver.
- Operating frequency: 160.9 MHz (programmable).
- Protection degree: IP55.
- Interface: NMEA 0183, USB port type A (Service).
- Power supply: 12-24Vdc, 0.15 A.
- Dimensions: 134 x 68 x 30 mm.
- Warranty: 2 Years.

| Order code | Description                | Packing quantity |
|------------|----------------------------|------------------|
| P20095     | W406 AMRD Group B Receiver | 1                |



<sup>2</sup> The W406 receiver requires an external antenna installed on the vessel. The performance of the W406 may be degraded if the receiving antenna is not installed correctly.



**WamBlee**  
Committed to Excellence

WamBlee s.r.l. - via Vittori, 19 - 48018 Faenza - tel. e fax +39 0546 623891  
e-mail: info@wamblee.it - [www.wamblee.it](http://www.wamblee.it)

