



**WamBlee**

Committed to Excellence

# W830

commercial fishing

## HF RECEIVER FOR LONGLINE FISHNET

- HF RECEIVER SYSTEM FOR LONGLINE RADIO BUOYS W8XX SERIES
- HIGH SENSITIVITY AND SELECTIVITY TO OPERATE IN HIGH ELECTROMAGNETIC INTERFERENCE ENVIRONMENT
- FULLY CONTROLLED BY PERSONAL COMPUTER
- SELF POWERED USB INTERFACE, LOW CONSUMPTION



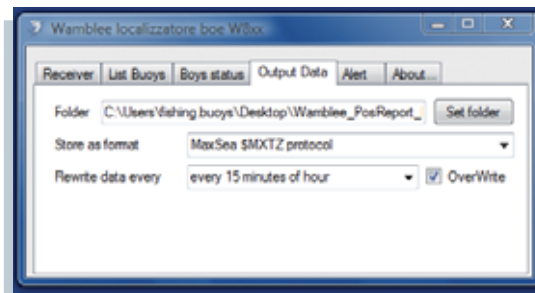
The Wamblee W830 HF Receiver is the ideal complement to the fishing radiobuoys W8xx for longline fishnet.

Easy to install, the W830 HF Receiver is able to receive and decode messages transmitted by radiobuoys fixed to longlines and process the information received through the special software provided.

Informations can be directly displayed on the screen of your personal computer, or archived for further consultation or linked to your chartplotter software<sup>1</sup>; with this facilities is possible to view the longline position directly on the navigation chart.

You can also set alarms for each individual event of each buoy, in order to promptly report possible anomalies, such as battery charge level.

Compact in size, the W830 HF Receiver is easily installable in any position and requires only the antenna connection (antenna non included) and connecting to your computer via USB port (power supplied from the same USB port).



<sup>1</sup>For Chartplotter interface, please contact your Distributor or our technical staff.

## TECHNICAL CHARACTERISTIC

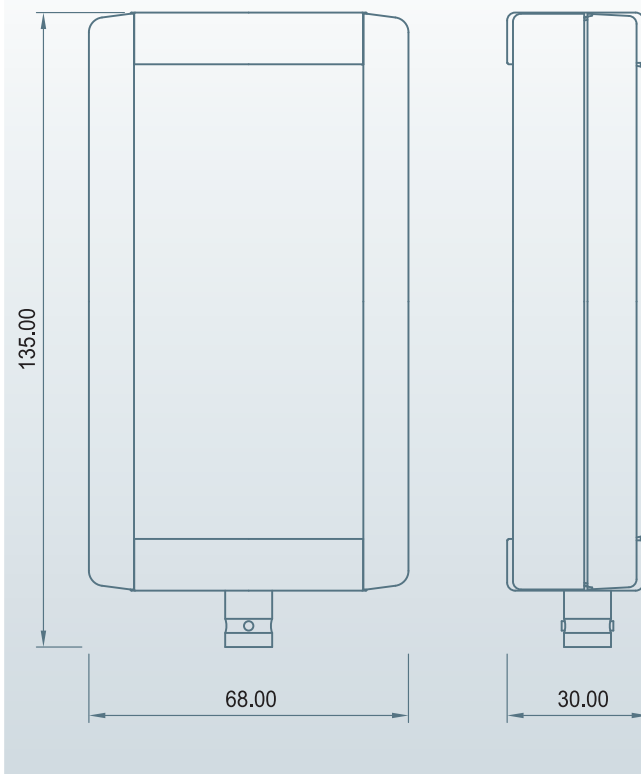
- HF receiver, superheterodyne double conversion thermo-stabilized<sup>2</sup>.
- Frequency: from 26.8 to 27.2 MHz.
- Sensitivity: 0.25  $\mu$ V / 10 dB SINAD.
- Selectivity: 12 KHz / -9dB; 30 KHz / -50 dB.
- Stability:  $\pm$  2ppm (+25° C).
- Demodulation: AFSK CCITT.
- Power supply: via USB port (limited 300mA).
- Working temperature: -20° to +55° C.
- Storage temperature: -30° to +70° C.
- H.R.: <70% (no waterproof).
- Interfaces: USB 2.0, BNC 50  $\Omega$
- Weight: 150 gr.
- Dimension: 134 x 68 x 30 mm.
- Case: PC (UL94 V-0).
- Installation: on desk horizontal, vertical.
- Complete with software driver and software for data management<sup>3</sup>.
- Warranty: 1 year.



<sup>2</sup> The W830 HF receiver requires an external antenna installed in the boat. Performance of the W830 can undergo a degradation in the case of an incorrect installation the receiving antenna.

<sup>3</sup> Drivers and software developed under Microsoft Windows<sup>®</sup>. For further details contact Distributor or our technical staff.

Order Code	Description	Packing quantity
P20020	W830 Receiver HF	1



**Wamblee**

Wamblee s.r.l. - via Vittori, 19 - 48018 Faenza - tel. e fax +39 0546 623891  
e-mail: info@wamblee.it - [www.wamblee.it](http://www.wamblee.it)



UNI EN ISO 9001:2015